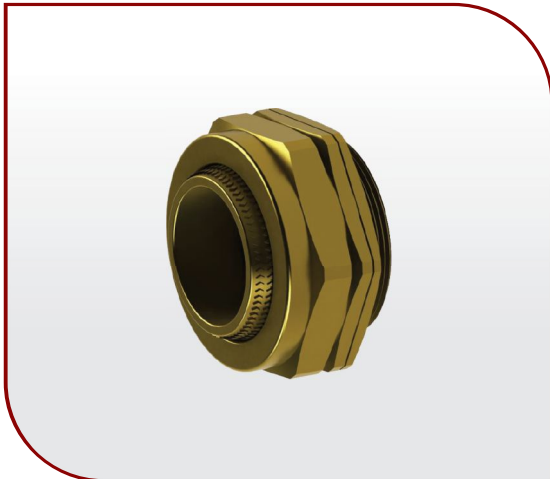


**BW ARMoured CABLE GLANDS**



**BS 6121 INDUSTRIAL TYPE GLANDS**

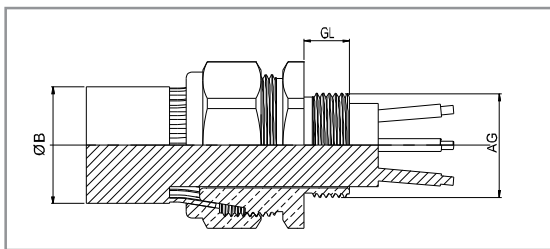


**ARMoured CABLE GLANDS  
BW SERIES**

**TECHNICAL DETAILS**

Type : BW type armoured gland  
 Certificates : ROHS, CE, PT, TUV  
 Material : Brass with or without nickel plated  
 Standards : BS 6121  
 Protection class : IP30  
 Temperature : -80 °C +600 °C:  
 Thread options : Metric , NPT , BSP & PG  
 Application : Dry Indoor, for use with all types of SWA cable  
 Accessories : Matches accessories available like PVC Shrouds locknuts & earth tag

Function : BW type glands provide mechanical cable retention & electrical wire continuity via armoured wire



**PRODUCT RANGE OVERVIEW**

Product Size	Product Code	Standard AG	AG NPT	B		GL
				Min	Max	
20s	BWL-M20s	M20x1,5	1/2"	11,5	15,5	10
20L	BWL-M20L	M20x1,5	1/2"	14	20,5	10
25L	BWL-M25L	M25x1,5	3/4"	20	27,2	10
32L	BWL-M32L	M32x1,5	1"	26,3	33,5	10
40	BWL-M40	M40x1,5	1 1/4"	32	40	15
50s	BWL-M50s	M50x1,5	1 1/2"	38,2	46,3	15
50L	BWL-M50L	M50x1,5	2"	44	52,6	15
63s	BWL-M63s	M63x1,5	2"	50,1	59	15
63L	BWL-M63L	M63x1,5	2 1/2"	56	65,3	15
75s	BWL-M75s	M75x1,5	2 1/2"	62	71,6	15
75L	BWL-M75L	M75x1,5	3"	68	78	15
90	BWL-M90	M90x2	3"	80,5	91	20